

**Wellis<sup>®</sup>**

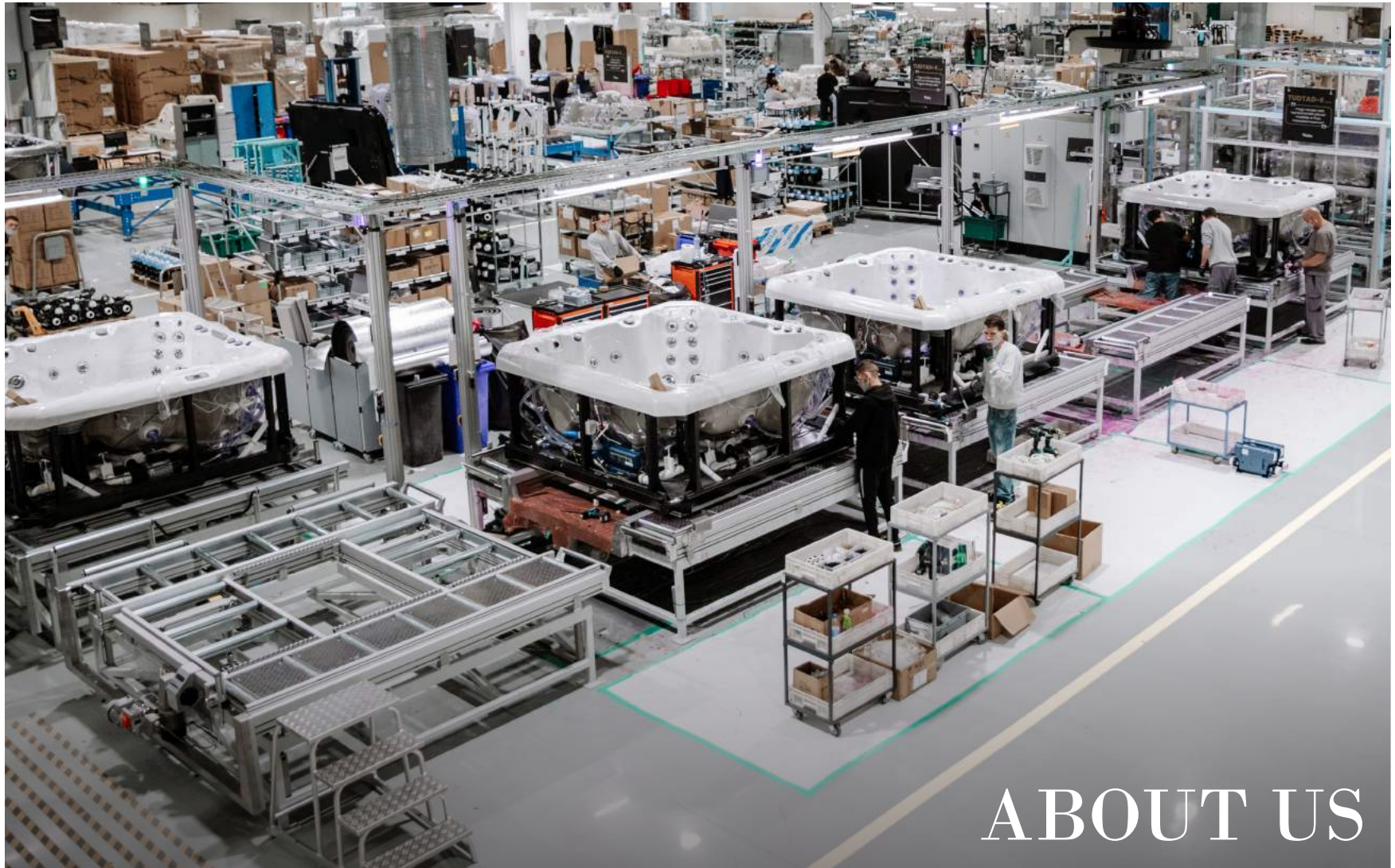
THE WORLD'S MOST ECO-FRIENDLY SPAS

 **Life** 2023





EUROPE'S LEADING SPA MANUFACTURER  
WELLISPA.COM



## ABOUT US

Since our company's beginnings in 2003, the Wellis brand has steadily extended its reach throughout the world. The increasing demand for a healthy lifestyle has boosted the desire for quality wellness products. Thanks to continuous development and growth, Wellis has now become the largest hot tub manufacturer in the European market and already has a significant share in the American market. We produce hot tubs, swim spas, hot tub covers, and hot tub cabinets in a 320,000 sq. ft. state-of-the-art factory. The initial

construction and continuous expansion of our manufacturing facility equipped with modern production tools was motivated by the ever growing market demand and our pursuit of quality manufacturing technology. We currently sell 30,000 Wellis hot tubs per year at more than 1000 points of sale worldwide. We have been developing our new product line for more than three years. Our new models are the culmination of countless licenses, thousands of work hours, and ongoing innovation. To stay true to our mission, we aim to create products

that are both user-friendly and eco-conscious. It is increasingly important to us to pay close attention to the needs of our customers while also protecting the earth.

The primary goal of our company is to provide a better wellness experience for our customers, while also lessening energy consumption as much as possible. In these new models, buyers will see significant technological advancements as well as a renewed design.

*"I was an active teenager; I traveled the world and was continuously on the hunt for new business opportunities. First, I worked on importing jeans from Asia, but I always wanted to learn and expand. Ultimately, my real success in business came when my brother and I started selling spas and together we created Wellis, Europe's leading hot tub company. In the beginning, we imported spas and hydromassage tubs as ready-made, pre-assembled products. The year 2010 became a gigantic milestone for Wellis and for us, as it was when we started manufacturing spas.*

*We started building the factory in the spring of 2008, and a few months later, the global financial crisis broke out. And then the great economic recession started. Everyone tried to talk me out of starting to manufacture hydromassage hot tubs in the middle of the crisis, as they absolutely count as luxury items. The opposition included the company's management. They also didn't endorse starting manufacturing, but I decided to go for it. To put it delicately, neither starting to make the products, nor introducing our own hot tubs to the European market was easy. Fortunately, our gamble worked out and*

*the rest is history. Our efforts were rewarded with much success and manufacturing products ended up pulling the company out of the crisis. As our next great leap, I suggested we try to expand into the American market – the native land of hot tubs. We have been growing our roots here and have been working to introduce the brand named Wellis to America. Parallel to expanding our business in the US, we would like to continue to grow overall. It is our passion to be on the cutting edge, but it's also an enormous responsibility!"*

*- Zsolt Czafik CEO and Akos Czafik CEO of Wellis Hungary*



# ECO-FRIENDLY ENERGY

## SUSTAINABLE PRODUCTION TECHNOLOGY

Instead of being merely a long-term vision, a sustainable economy has become part of everyday life at Wellis. In the last few years, our company has placed increasing emphasis on the elements of an environmentally friendly and sustainable model.

Our efforts are based on two essential pillars: The first is to optimize our production process and the second is to educate our customers about energy and water-saving aspects, giving special consideration to environmental factors.

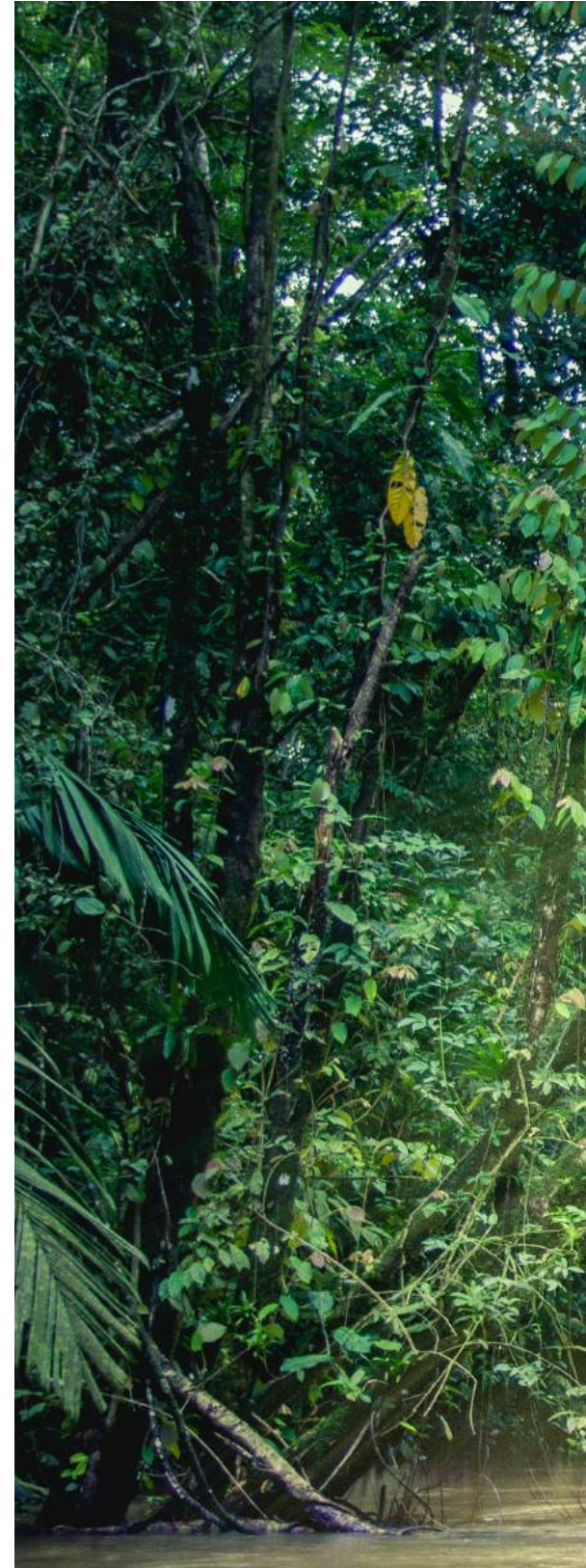
Here are some processes which were introduced into the daily life of our company:

- Recycling unnecessary substances with a special shredder.
- Producing ABS (Acrylonitrile butadiene styrene) from recycled plastic.
- Using low-consumption pumps in spas.
- Various developments in the name of renewable energy, like integrating solar systems into our processes.
- Shortening transport routes around the world and coordinating production and sales activities.
- New energy-efficient hot tub models.



### SAVE THE RAINFOREST

**We keep environmental awareness at the forefront of our minds during manufacturing. For instance, we eliminated the use of wood during production and replaced it with recycled materials. As such, we are protecting nature and staying mindful of the most effective recycling practices. At the same time, Wellis is also staying on top of technological innovations.**









---

# 01

Energy Efficiency

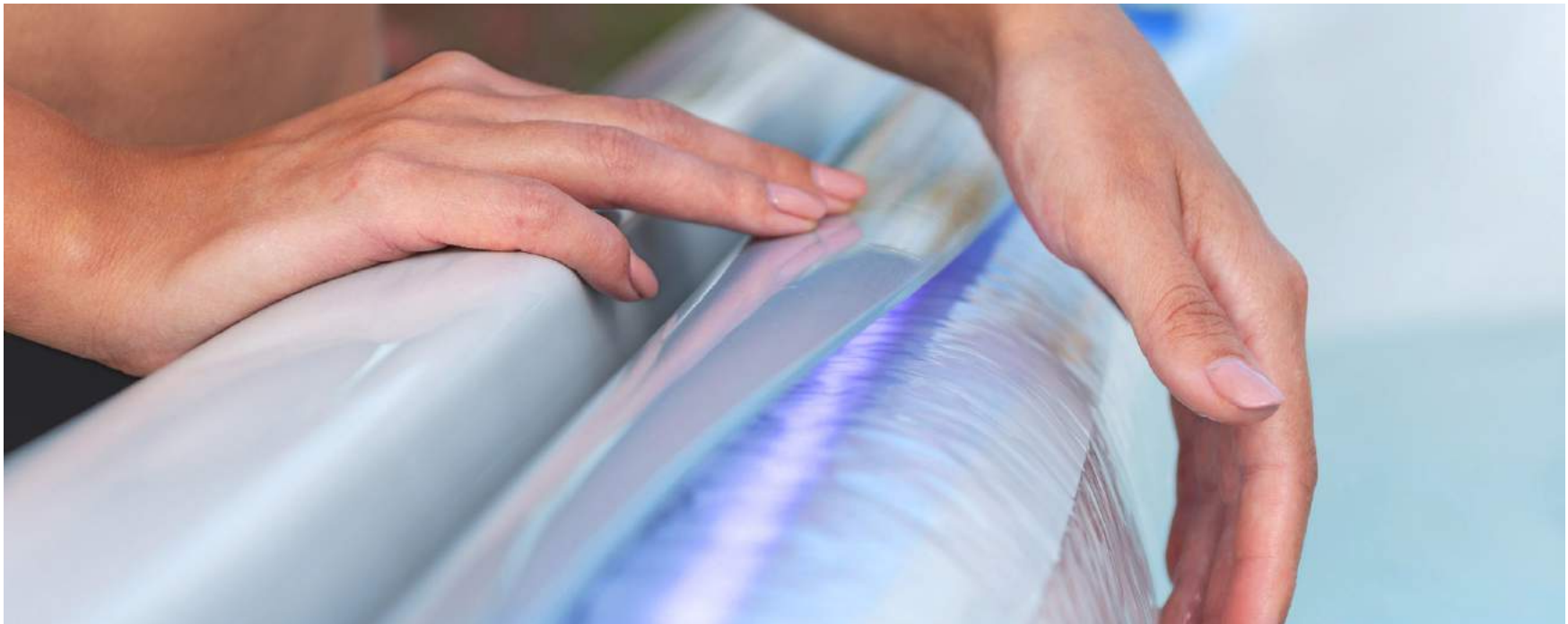
# QUALITY ASSURANCE

Wellis quality is continuously benchmarked against the highest German production standards under the TÜV Certification protocol that we subscribe to. This ensures we constantly meet and exceed all relevant international standards.

We are proud of this commitment to excellence and the clear differentiation from our market competitors that it affords us.

Our TÜV certificate guarantees that our products are of excellent quality and are

regularly and independently monitored to meet and exceed the highest manufacturing standards. The CE label on all of our products assures our customers that the design and build meet or exceed all relevant EU standards.



## PRODUCT WARRANTY:

### PEAKLIFE & SWIMLINE SERIES:

10 years on the shell structure of the spa

5 years on the cabinet of the spa

5 years on the control box and the display module

5 years no leak plumbing warranty

### CITYLIFE:

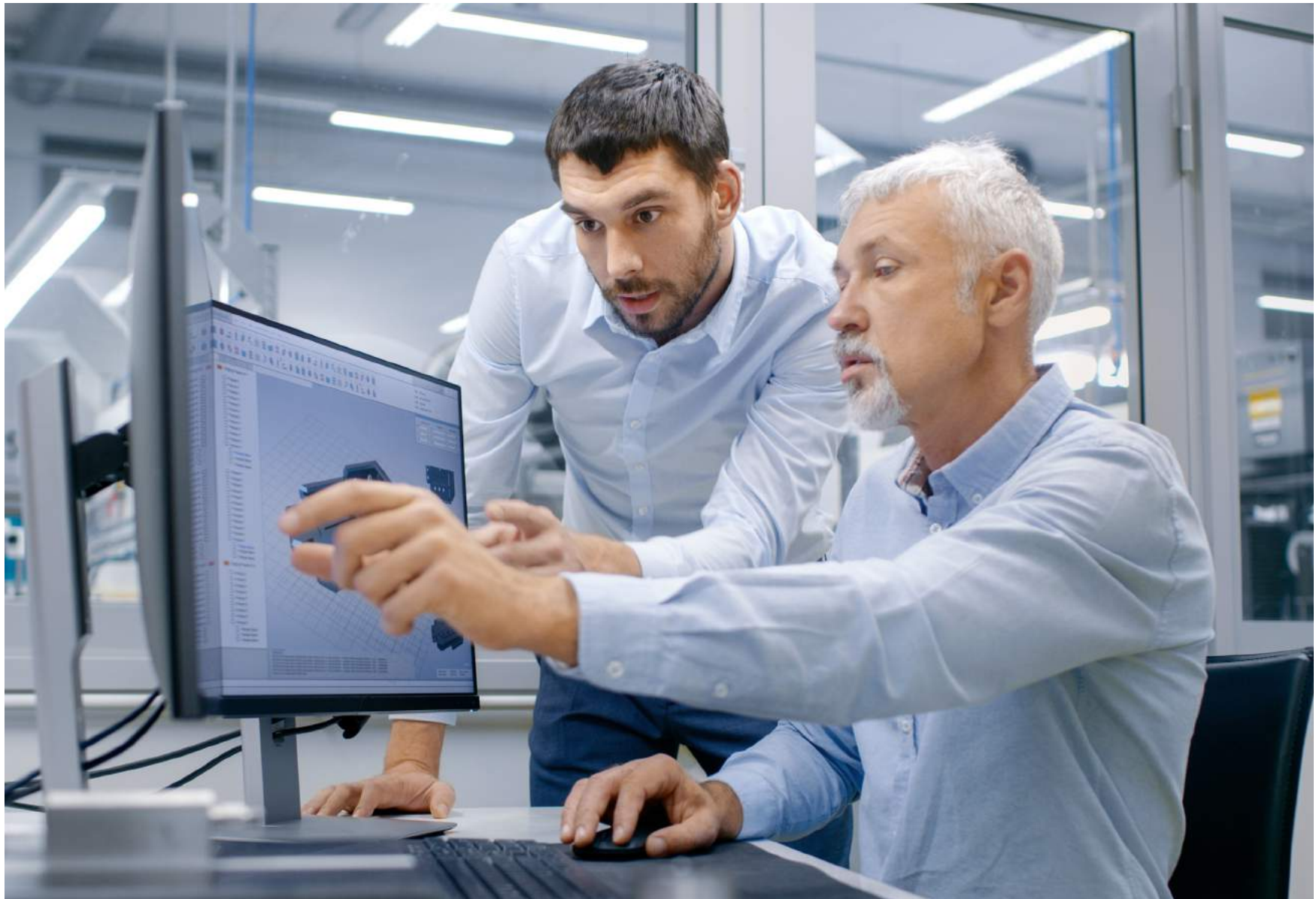
10 years on the shell structure of the spa

3 years on the cabinet of the spa

3 years on the control box and the display module

3 years no leak plumbing warranty

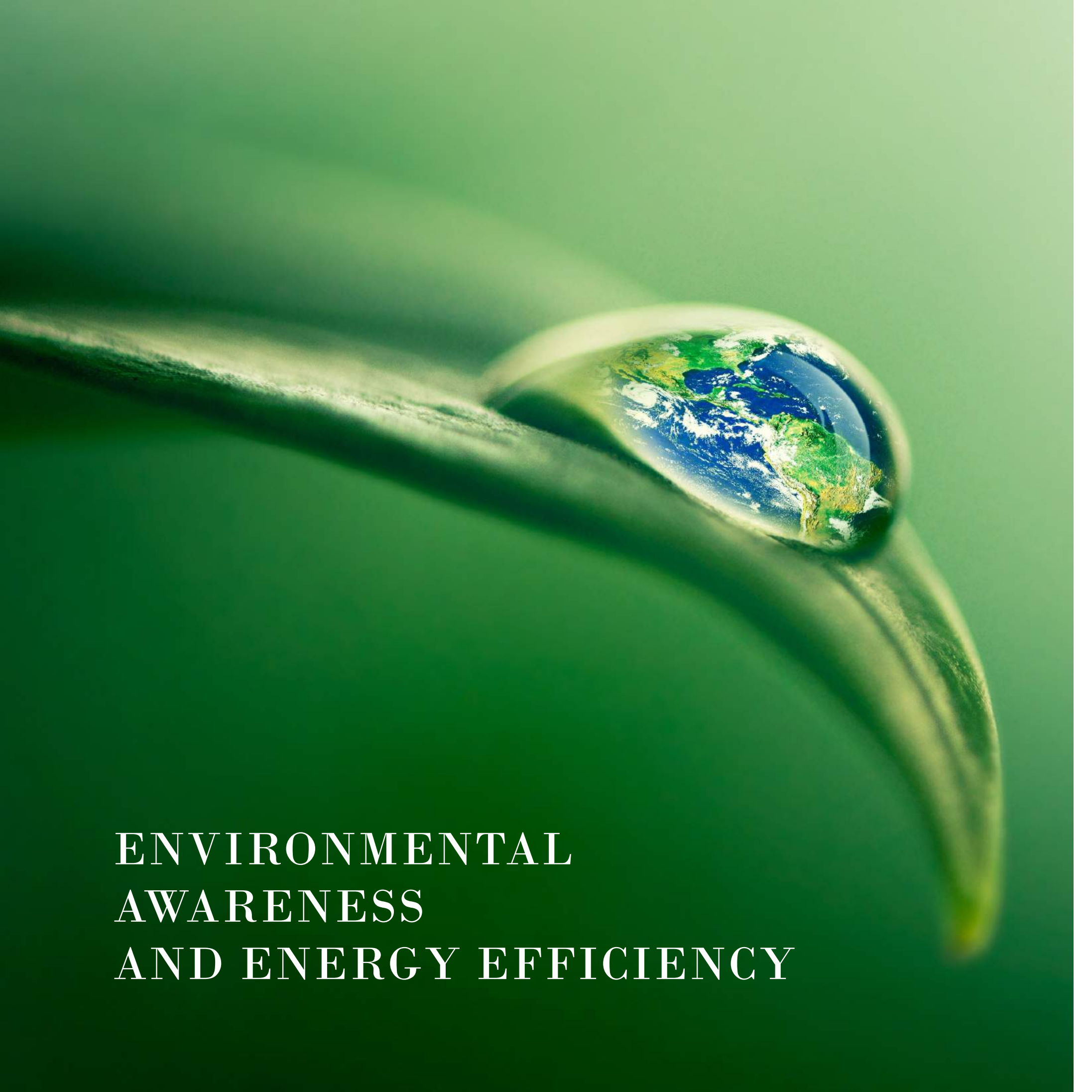
# THE RESULT OF 3 YEARS OF DEVELOPMENT



The Wellis R&D team has been working for 3 years on the new product portfolio, which is poised to revolutionize the hot tub industry.

61 patents are already registered in Europe and 14 in the US. Wellis also has a world patent for our electric water diverter. Our many

technology breakthroughs have resulted in energy-efficient and environment-friendly solutions.



**ENVIRONMENTAL  
AWARENESS  
AND ENERGY EFFICIENCY**

Our goal is to find energy efficient solutions while also focusing on sustainability and environmentally conscious production

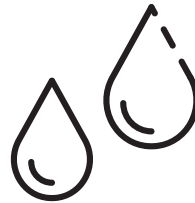
technologies. It became obvious that our new and renewed products would also be produced by these standards. This is the reason our new

line was named Life. The name will be displayed by both our product families: PeakLife and CityLife.

### ENERGY EFFICIENCY



### WATER TREATMENT



### DESIGN, APPEARANCE



## FOCUS ON ENERGY EFFICIENCY

**Wellis  
Makalu *Life***

with  
SMART-in Step system

**2.9 kWh / day**  
**\$ 404 / year\***

**Bullfrog  
A7LC**

Full foam (CEC)

**3.96 kWh / day**  
**\$ 551 / year\***

**Hot Spring  
Envoy**

Full foam (CEC)

**4.45 kWh / day**  
**\$ 620 / year\***

**Jacuzzi  
J-475**

(CEC)

**5.47 kWh / day**  
**\$ 762 / year\***

**Chinese  
spa**

(CEC)

**10.00 kWh / day**  
**\$ 1394 / year\***

\*Sources: CEC - California Energy Commission; Wellis - Based on Wellis measurements with Smart-In Step System, California Energy Commission data: water 39 °C, air 17 °C, filtering 1x2 hour. 1kw = 0.35 cents average calculated: [https://ec.europa.eu/eurostat/statistics-explained/index.php/Electricity\\_price\\_statistics](https://ec.europa.eu/eurostat/statistics-explained/index.php/Electricity_price_statistics)



# NEW WATER DIVERTER:

## WOW SYSTEM

Our improved electric water diverter replaces the large manual diverter. Our new device performs the same function and comes with a small control panel for ease of use. The electric water diverter makes for a gentler massage experience because after activation, the speed of the water increases gradually. Through automation, we've built a new massage experience into the hot tub. The gradual changing direction of the massage every five seconds, creates a pulsing effect, providing an even more invigorating feel than a traditional massage.

For the water current, we combined the massage strength of two older-model massage pumps in one by straightening

the pipes and installing the new water diverter. In this way, the consumption of energy while in use has been reduced to half the previous amount. Wellis' energy-efficient water diverter is patent registered in 152 countries. Compared to our competitor's solution, it has 23% higher pressure with approximately 30% less energy consumption. Moreover, we compared it to our previous models, and the results were that it has **75% higher** pressure with approximately **41% less** energy consumption

#### WELLIS EVEREST WITH OLD WATER DIVERTER:

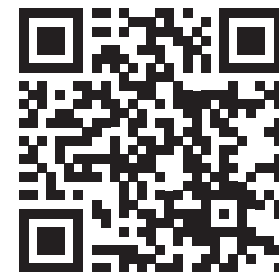
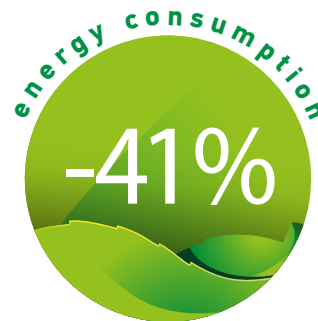
Requirement for a 12 PSI massage:

2x3HP + 2x2HP pumps and 7400 W

#### WELLIS EVEREST LIFE WITH NEW DIVERTER

Requirement for a 12 PSI massage:

2x3HP pumps and 4400 W



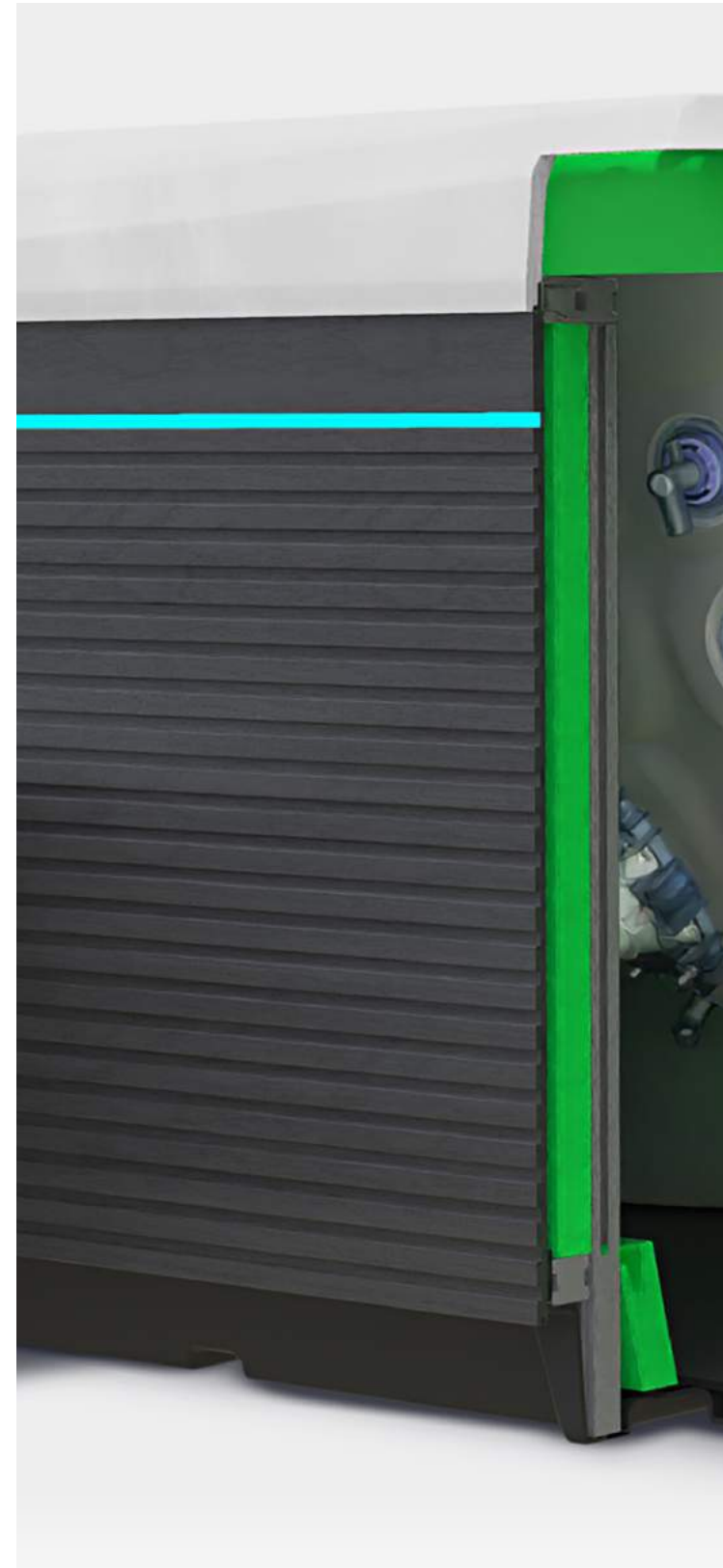
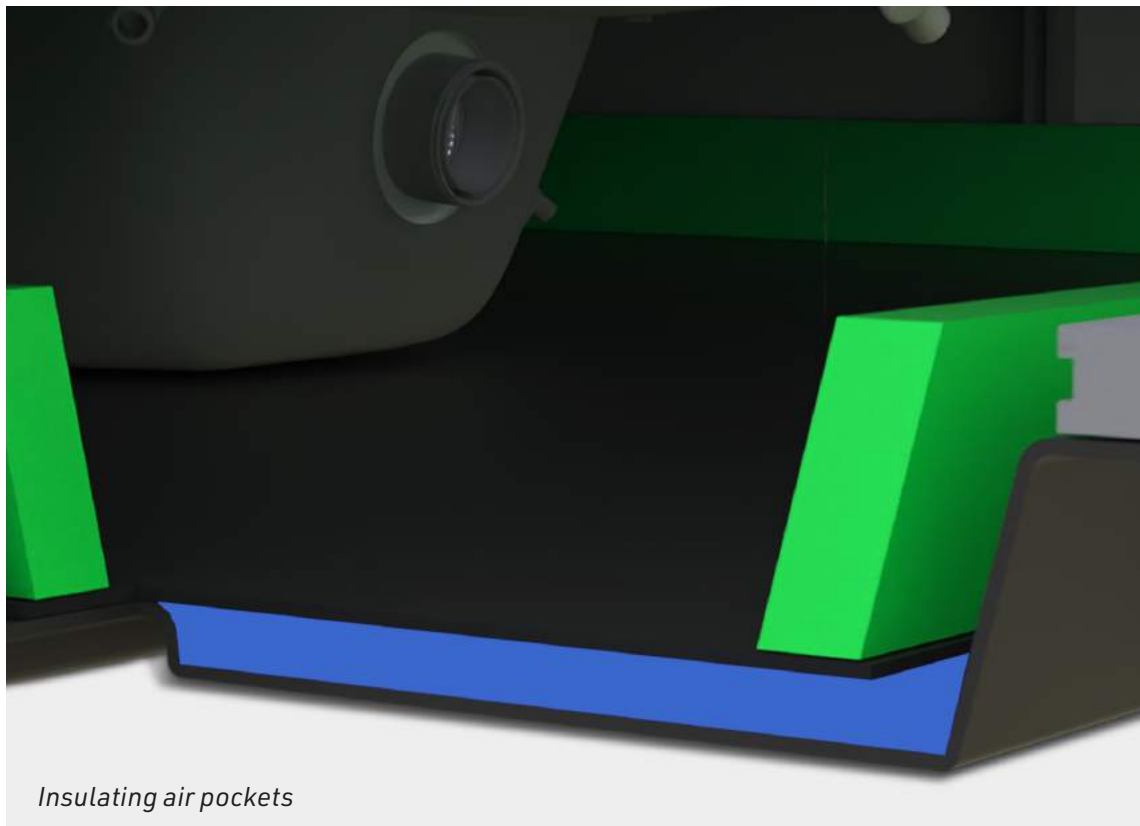
*New Life Line Video*

# NEW SCANDINAVIAN INSULATION

All of our new spas incorporate an innovative Scandinavian insulation. In addition, 1.4" of **POLYFOAM** boards have been installed into the spa's framework, rather than fastening them to the cabinet. The **POLYFOAM** is fit specifically for each model and can be easily removed and reinstalled with ease.

The foam insulation under the rim has also been exchanged for an aesthetically pleasing 1.4" of **POLYFOAM** insulation.

In the ABS bottom pan, we have replaced the polyfoam with the best insulator we could find – Air. We achieved this by installing an ABS sheet 1.2" from the bottom plate, creating insulating pockets of air.



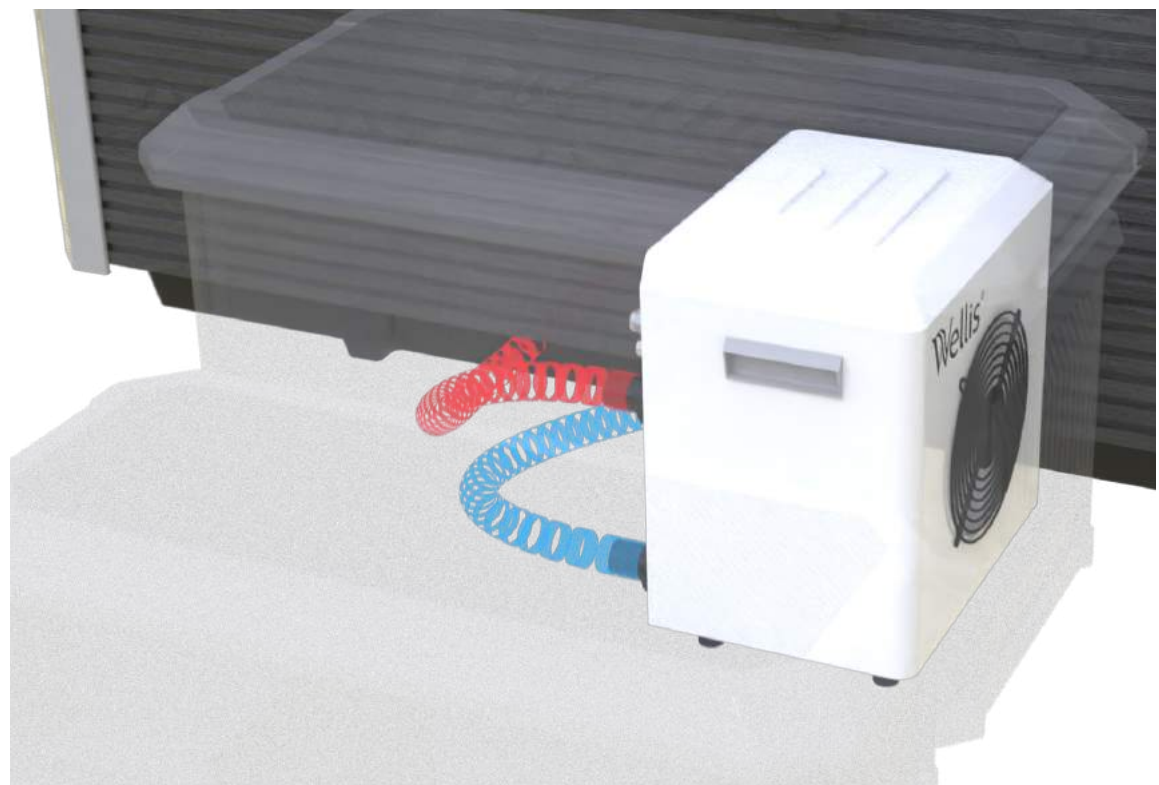






# SMART-IN STEP SYSTEM

In Wellis spas, the heat pump can be stowed under the larger step. In doing so, the heat is maintained in a cost-efficient manner, without affecting the product's aesthetics. The Smart-In Step with built-in heat pump can heat or cool from 59°F up to 104°F, (saving up to 70-75% of heating energy). Inside the steps we also designed storage compartments. These handy areas are perfect for storing towels or chemicals, and there is also a compartment for charging cell phones (equipped with a USB hub).



# SMARTPHONE APPLICATION

Control your spa from home or while you are on the road with the Wellis Smartphone™ app!

The app is available for both iPhone and Android smartphones.

Set the desired temperature and other functions from your phone before you head home so that, by the time you arrive, you have a heated, welcoming spa waiting for you. Your luxurious Wellis hydromassage is now available at the touch of a button.







02

Water Purity





# WATER PURITY

All Wellis spas use a multi-stage filtration and sanitation system that ensures crystal clear, safe bathing water with minimum user input. The process starts with our special antimicrobial cartridge filters. The low-energy eco-circulation pump draws spa water through the filters where any tiny particles are then trapped. The antimicrobial coating then helps to eliminate any bacteria that may be attached to the filtered particles. This helps prevent any odors and bacteria growth from developing.

Once the spa water has been filtered, it passes through the heater and then the eco-circulation

pump. Next, it is passed through the sanitation device.

Although hot tub water can be kept safe with chemicals alone, an electronic sanitation device greatly reduces the amount of chemicals required, thereby improving the water quality for soakers. Every spa we make is fitted with the highly-efficient OZMIX™ water purification system.







### CRYSTAL CLEAN SYSTEM

Thanks to the 2" diameter pipe, our motor circulates more water and does so faster, thus, filtering the water more rapidly. The new circulation jet has been designed to have 3 zones. Two of these zones direct the water downwards to stir up heavier debris that has settled in the footwell of the hot tub.

The third zone helps direct the flow toward the filtration system.

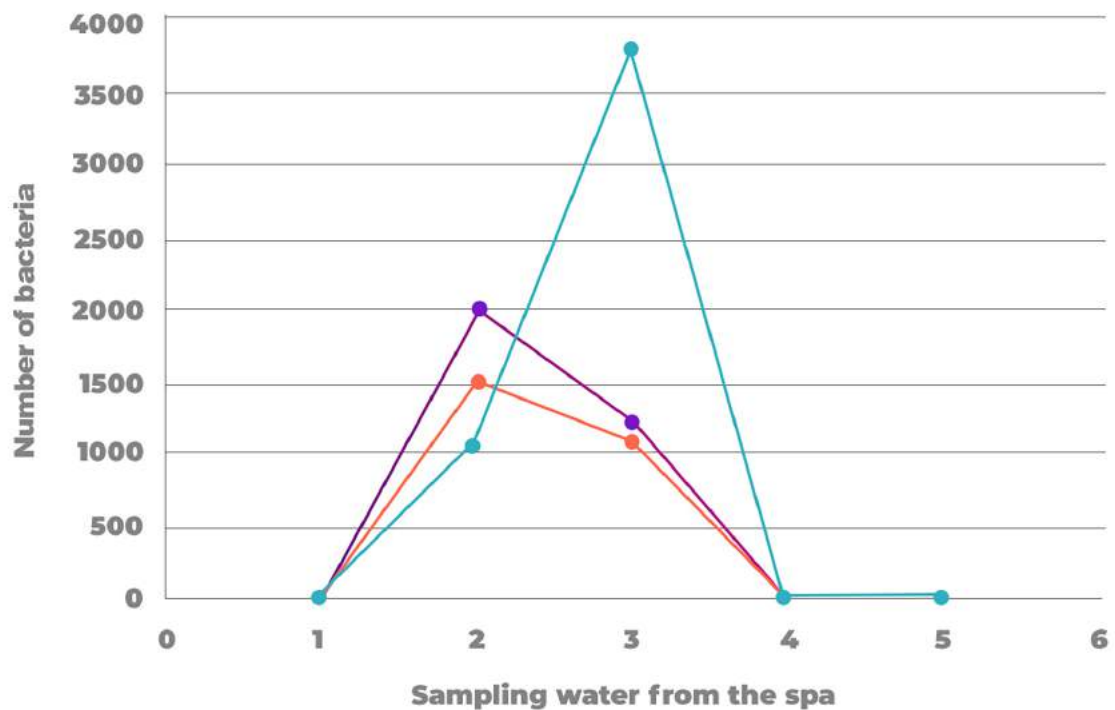
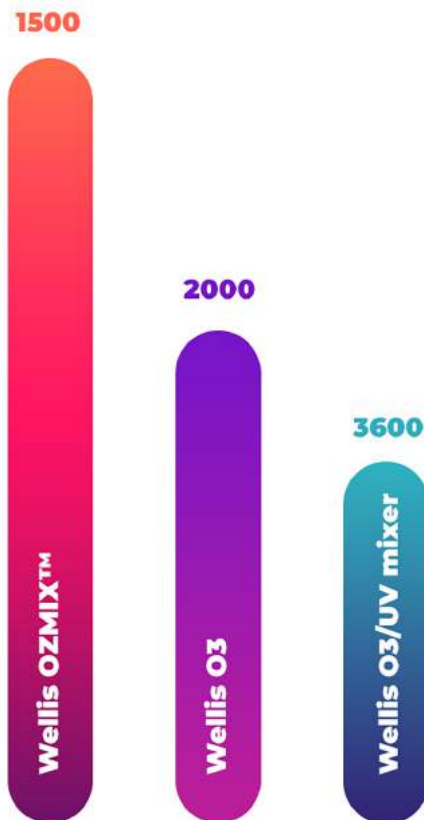
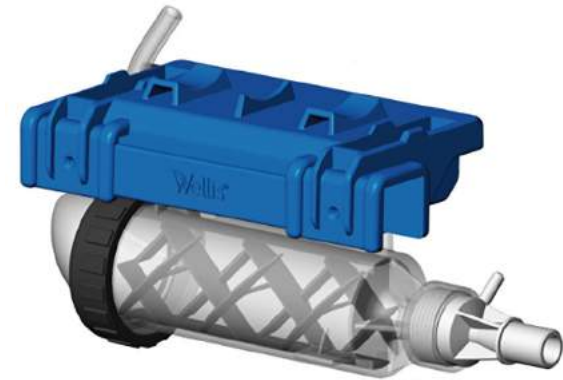


# OZMIX™ SYSTEM

Disinfection efficiency can be increased by mixing ozone in the water. Tests have shown that the ozone systems we are using are the most efficient form of disinfection. To facilitate this process, we created the OZMIX™ system. This system has proven to be more effective than comparable disinfection systems with the addition of chlorine and a balanced pH.

Our goal is to achieve the best possible disinfection system while reducing the amount of chemicals that are currently needed for the safe use of a spa.

We tested the OZMIX™ system on all the bacterial strains associated with hot tub use and it performed better than all of the other disinfection systems. In tests, we found that the ozone + UVC system showed more than 4,000 units of bacterial colonies. That number was significantly reduced to 1,500 when evaluated with the OZMIX™ system in use.







# IN-LINE WIS

- This useful, built-in accessory provides 24-hour monitoring of your spa water's quality status via your smartphone.
- The system also outlines the exact chemicals and dosages needed to maintain proper water balance.
- Since this is a built-in system, there is nothing to float around in your hot tub or need to be replaced. This feature has been specially developed by our Wellis team.
- You can download the WIS application from Google Play or the App Store.



App Store



Google Play







---

# 03

Experience and Design

# FUTURE OF DESIGN





#### **LIGHTSIDE™ SPA CABINET**

The wood grain-look finish of the cabinet and wide horizontal side and corner bars add an intimate atmosphere to the appearance of the Wellis lineup of spas. Cabinets are available in both gray and brown. Our new spa cabinet is sleek and aesthetically pleasing. An eye-catching LED strip runs along the side of the spa cabinet (PeakLife). Newly developed corner elements give a more modern and refined look to our new design.

#### **NECK MASSAGE & HEADREST**

The neck massage and headrest take your daily stress off your shoulders and neck with their advanced ergonomics and more comfortable design. The design of the headrest follows the line of the neck and head, creating a cradle so you can relax even more comfortably in our hot tubs.



#### **FILTER HOUSING**

Our custom-made filter housing has an outstanding design and complements the overall design of the hot tub. Filters can be replaced easily in one easy step.

#### **WATERFALL**

Sit under the cascading water and enjoy a soothing neck and shoulder massage. This blissful water feature is a new development for Wellis. There is no other product on the market like it.

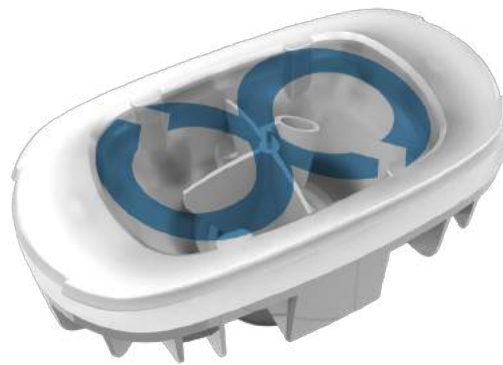




*Design Jets*

#### **INFINITY JET**

We specially designed the 7" rotating infinity jet. This jet makes the experience even more enjoyable by massaging a larger portion of the body. Rather than just moving up and down, it draws a figure eight as it rotates.



*PeakLife filter housing*







WELLIS-CENTRIC LIGHTING

Wellis-Centric Lighting (WCL) is based on the belief that colors and colored lights can have a positive impact on a person's physical and mental health. Various scientific studies have shown a relationship between the human body and specific colors.

Green - Calming

Blue - Relaxing

White - Productivity

Purple - Enlightenment

Yellow - Energy

Red - Stimulating

Orange - Positivity

Pink - Healing

Indigo - Peaceful

#### **IN.MIX COLOR THERAPY MOOD-LIGHTING**

When connected to our SmartTouch control systems, in.mix transforms our touch screen into

a real lighting console with a perfectly designed interface. Create your personalized ambiance easily with an infinite selection of colors and a light intensity dimmer. In.mix can drive and control up to three light zones in or around your spa (inner, rim, cabinet). The color selection can be independently managed or synchronized to create stunning visual displays. In.mix comes with a built-in power supply and can be connected to your spa's control system. It can illuminate the water of your spa or create accent colors around it.

#### **EVENLIGHT JETS**

At Wellis, we came up with countless patents for our new models, one of which was for lighting jets. The jets illuminate not just themselves, but also the surface around them. The interior of the spa is sleek and modern in its appearance and is like sitting in a spaceship. There is nothing else like this on the hot tub market. The lighting jets not only give the spa a more modern appearance, but also a larger lighting surface.

#### **EDGE LIGHTING**

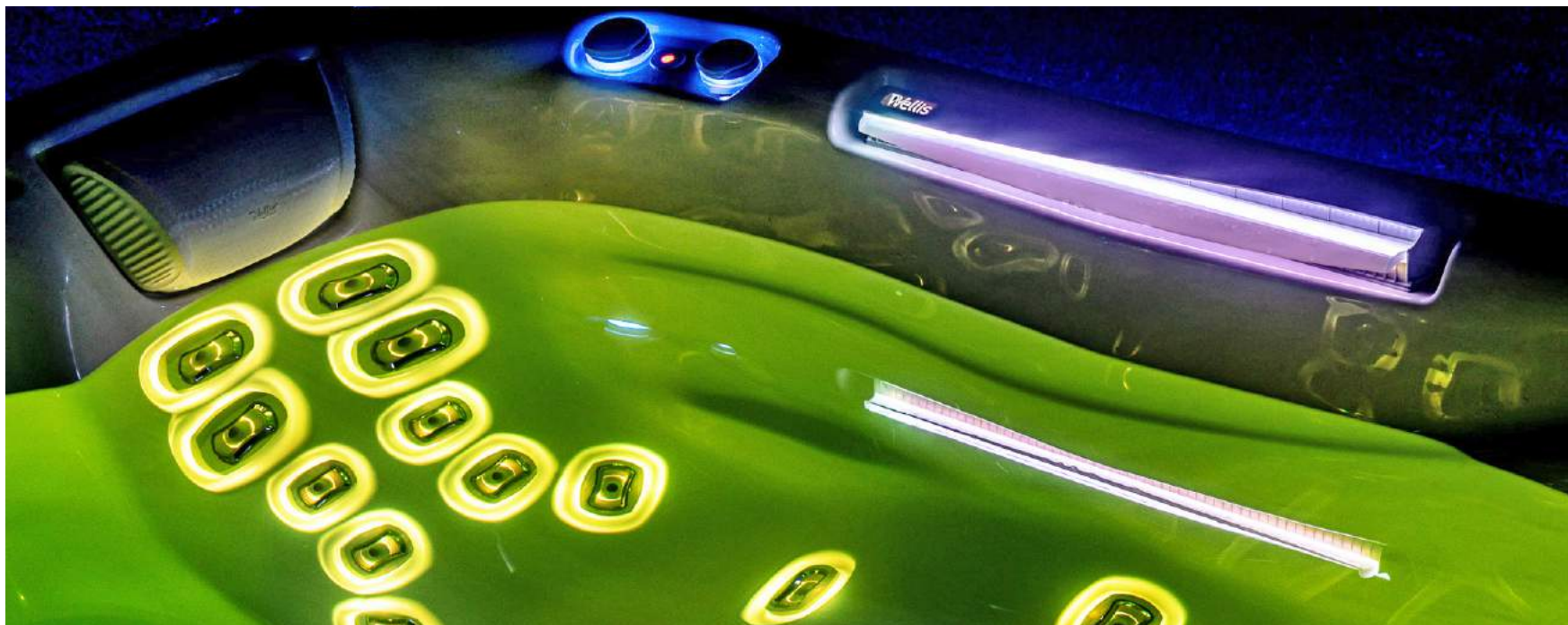
The Edge lighting is a separately controllable lighting and design element located under the accents, the cup holder, water features, and the filter housing. You can control them all at the same time. This lighting can differ from the color of the EvenLight jets.

#### **LIGHTSIDE™ CABINET SYSTEM (PEAKLIFE)**

The LightSide™ cabinet system appears in Wellis' new spas, which includes hidden lighting under the corner elements, and an in-house developed LED strip, which runs along the side cabinet of the hot tub. The light can be adjusted separately. The integrated LED strip gives a special atmosphere while relaxing.

#### **WELL LIGHTING**

All of our hot tub models include central underwater lighting, which lights the water of the entire spa.











# WELLIS MASSAGE

## RELAX MASSAGE SEAT

This seat targets the regeneration of the shoulder girdle and the longitudinal trunk muscle tissues, as well as the hip flexor muscles and the knee extensor muscles – the muscle groups most exposed to everyday strain.

## EXPERT MASSAGE SEAT

This seat's adjustable jets offer physiological effects, with customized directional and strength control.

## COOL DOWN MASSAGE SEAT

The armchair design provides relaxation after training. In addition to the physiological recovery offered, its overall calming effects are also significant.

## FOCUS MASSAGE SEAT

This seat offers its user an experience similar to

the "Expert" effect, relaxing the longitudinal trunk muscle tissues, and passively activating the hip and thigh flexor and extensor muscle groups.

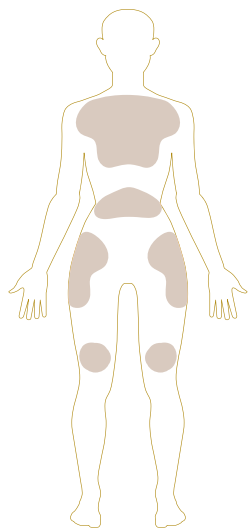
## BODY FLOW MASSAGE SEAT

This is the massage seat with the most intensive physiological effect. In addition to affecting the trunk's muscle tissue, it also positively impacts venous and lymphatic circulation in the lower limbs, bringing relief to vein valves.

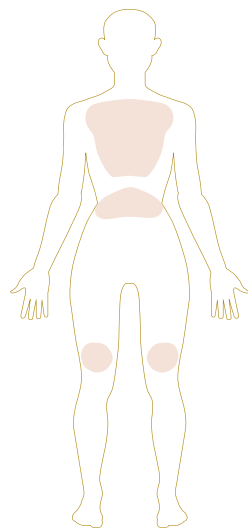
## INTENSO MASSAGE SEAT

This is the most refreshing massage seat and is a favorite of professional athletes. Intenso is ideal for recovery after an intense training session, working the most critical areas, the back and leg muscles.

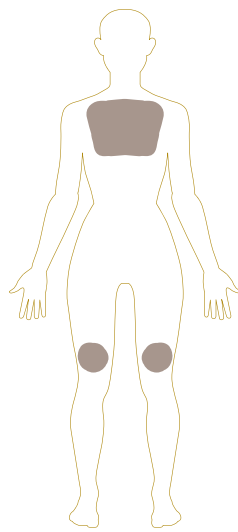
\* The layout of the jets varies by model.



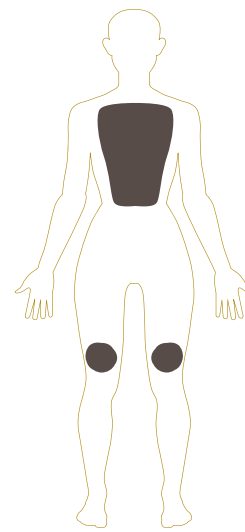
Relax massage



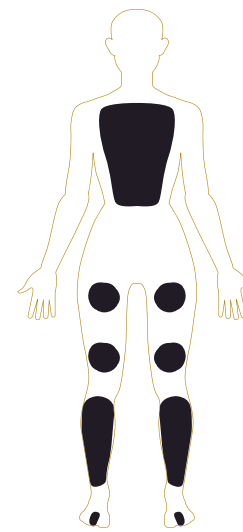
Expert massage



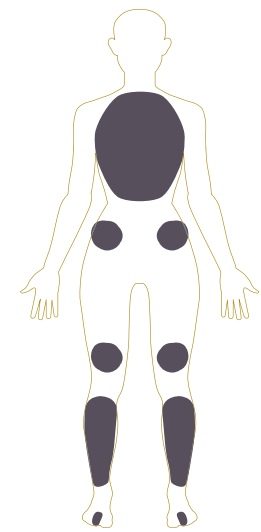
Cool down massage



Focus massage



Body flow massage



Intenso massage



## COLORS OF WELLIS



### ACRYLIC COLORS

With our comprehensive range of beautiful contemporary acrylic shades, there is something to harmonize with any setting – indoor or out. Choose from: Sterling Silver, Tuscan Sun, or Midnight Canyon.

### CABINET COLORS

No more sanding, oiling, and messy maintenance of a traditional timber cabinet. Our spa cabinets are made of a UV-resistant polymer material that looks as good as real wood, but is entirely maintenance free. PeakLife spas have the new

LightSide™ design cabinet paired with vertical corner elements, lending an elegance touch to the aesthetics. Cabinets are available in gray and brown.



# CONTROL PANELS

## **SMARTTOUCH CONTROL PANEL (PEAKLIFE)**

The control panel offers a full-featured keypad with color capacitive touchscreen display. Eliminating the need for physical buttons, keys, and overlays, our touchscreen keypad is fun to use, simple to operate, and features an intuitive and engaging one-level menu interface.

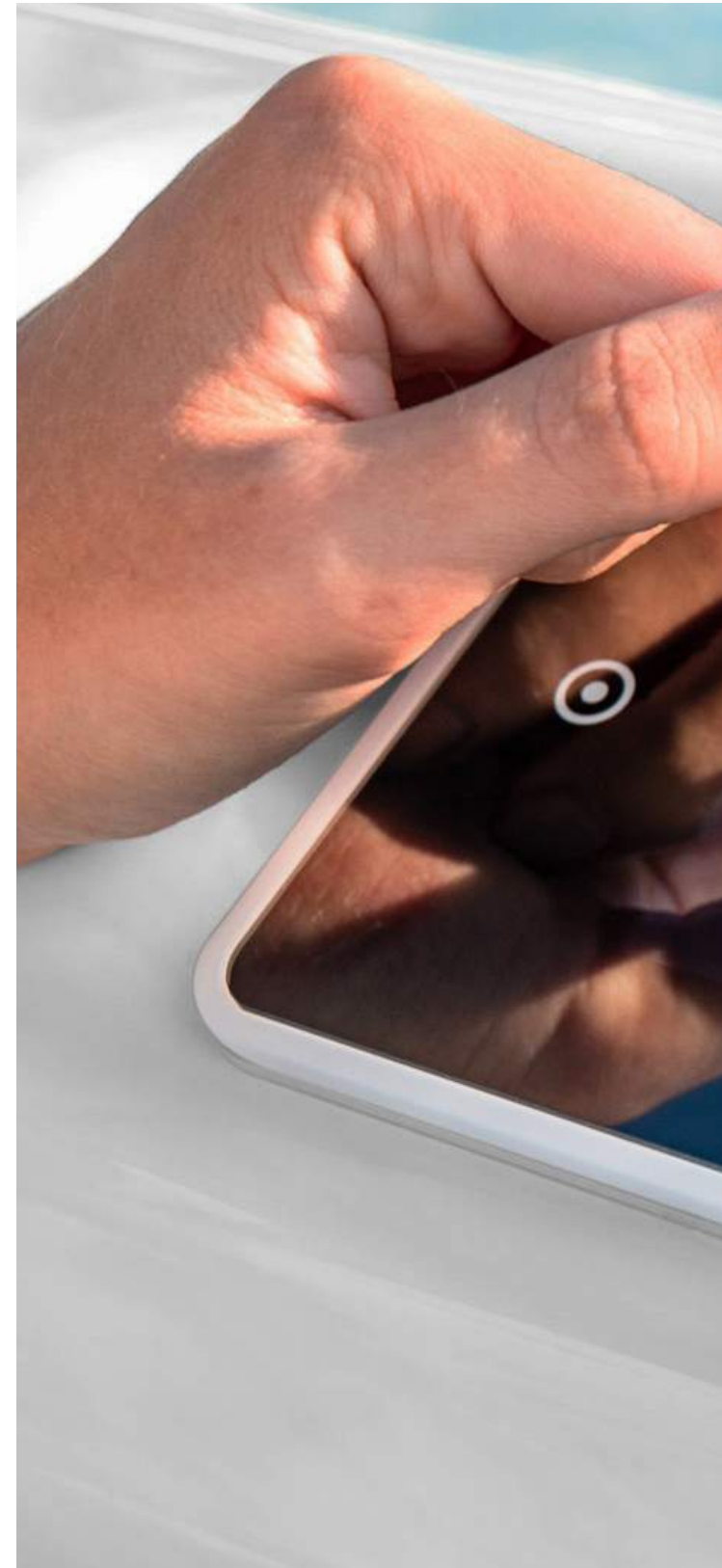
## **EASY 7 CONTROL PANEL (CITYLIFE)**

The Wellis Easy 7 brings all the features you really

need to one keypad. Compact, with a large LCD display, the screen is bright enough to be seen throughout the day and simple enough to use in the middle of the night.

## **AUXILIARY CONTROL PANELS (PEAKLIFE) 2 PIECES**

The single button is also an auxiliary keypad, designed to be installed as a second keypad on your spa. This feature allows you to activate the spa pump associated with its respective section.









# PEAKLIFE SERIES



Everest Life  
Kilimanjaro Life  
Elbrus Life  
Teide Life  
Atlas Life  
Mandala Life  
Olympus Life



energy consumption  
**3.2**  
kWh / day\*

## EVEREST LIFE

93 × 93 × 37 in  
2 reclining seats, 3 upright seats



**Premium Edition**

Net weight / Water volume	996 lbs / 365 gallons
Frame	Wellis PolyStyrol (WPS)
Cabinet	LightSide™ UV-proof wood textured
Reinforcement	Poli-MAX™
Scandinavian insulation	Polyfoam 1.4 in
Total number of jets	68
∞ Infinity jets	6
Min / Opt. power requirement	22A / 35A - 240V/60Hz
Pumps	1 × 3 HP + 1 × 3 HP double speed
Circulation pump	W-EC pump (0.25 kW)
W.O.W. system	electronic water diverter
Heater	4 kW
Control box / panel	Gecko (IN.YE-5) / SmartTouch
Auxiliary control panel	2 × 1 buttons
Water sanitization	Ozmix™ system (Ozone + mixer)
Cartridge filter	3 × MicroPlus antibacterial
Flat fountain jets	2 Lighted Fountain Jets
Waterfall	24" Lighted Waterfall
Light-zone system	Zone 1: Well Light with EvenLight Jets Zone 2: Edge Lighting Zone 3: Cabinet & Corner Lighting
Remote spa control	SmartPhone app with wifi connection
Thermo cover	standard - 3.5 in
W.I.S. Inline system	built-in water analyzer

**Options**

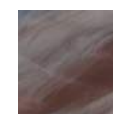
3 kW heat pump
Smart-In step prepared to house heat pump



New 24" lighted waterfall

New Intenso massage seat  
with infinity jets**ACRYLIC**

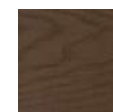
Sterling silver



Tuscan sun



Midnight canyon

**SIDE COVER**

brown



grey

\* California Energy Commission data: water 102 °F, air 62 °F, filtering 1×2 hour. Based on Wellis measurements with heat pump.



energy consumption  
**3.2**  
kWh / day\*

## KILIMANJARO LIFE

93 × 93 × 37 in  
1 reclining seat, 5 upright seats



**Premium Edition**

Net weight / Water volume	1001 lbs / 383 gallons
Frame	Wellis PolyStyrol (WPS)
Cabinet	LightSide™ UV-proof wood textured
Reinforcement	Poli-MAX™
Scandinavian insulation	Polyfoam 1.4 in
Total number of jets	59 jets
∞ Infinity jets	6
Min / Opt. power requirement	22A / 35A - 240V/60Hz
Pumps	1 × 3 HP + 1 × 3 HP double speed
Circulation pump	W-EC pump (0.25 kW)
W.O.W. system	electronic water diverter
Heater	4 kW
Control box / panel	Gecko (IN.YE-5) / SmartTouch
Auxiliary control panel	2 × 1 buttons
Water sanitization	Ozmix™ system (Ozone + mixer)
Cartridge filter	3 × MicroPlus antibacterial
Flat fountain jets	2 Lighted Fountain Jets
Waterfall	24" Lighted Waterfall
Light-zone system	Zone 1: Well Light with EvenLight Jets Zone 2: Edge Lighting Zone 3: Cabinet & Corner Lighting
Remote spa control	SmartPhone app with wifi connection
Thermo cover	standard - 3.5 in
W.I.S. Inline system	built-in water analyzer

**Options**

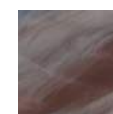
3 kW heat pump
Smart-In step prepared to house heat pump



Infinity foot massage

Foot, calf and thigh massage  
in one reclining seat**ACRYLIC**

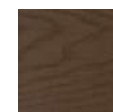
Sterling silver



Tuscan sun



Midnight canyon

**SIDE COVER**

brown



grey

\* California Energy Commission data: water 102 °F, air 62 °F, filtering 1x2 hour. Based on Wellis measurements with heat pump.



energy consumption  
**3.2**  
kWh / day\*

## ELBRUS LIFE

93 × 93 × 37 in  
7 upright seats



**Premium Edition**

Net weight / Water volume	996 lbs / 396 gallons
Frame	Wellis PolyStyrol (WPS)
Cabinet	LightSide™ UV-proof wood textured
Reinforcement	Poli-MAX™
Scandinavian insulation	Polyfoam 1.4 in
Total number of jets	61 jets
∞ Infinity jets	4
Min / Opt. power requirement	22A / 35A - 240V/60Hz
Pumps	1 × 3 HP + 1 × 3 HP double speed
Circulation pump	W-EC pump (0.25 kW)
W.O.W. system	electronic water diverter
Heater	4 kW
Control box / panel	Gecko (IN.YE-5) / SmartTouch
Auxiliary control panel	2 × 1 buttons
Water sanitization	Ozmix™ system (Ozone + mixer)
Cartridge filter	3 × MicroPlus antibacterial
Flat fountain jets	2 Lighted Fountain Jets
Waterfall	Lighted Waterfall
Light-zone system	Zone 1: Well Light with EvenLight Jets Zone 2: Edge Lighting Zone 3: Cabinet & Corner Lighting
Remote spa control	SmartPhone app with wifi connection
Thermo cover	standard - 3.5 in
W.I.S. Inline system	built-in water analyzer

**Options**

3 kW heat pump
Smart-In step prepared to house heat pump



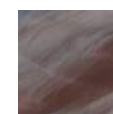
WellDome foot massage system



Custom corner with lighting

**ACRYLIC**

Sterling silver



Tuscan sun



Midnight canyon

**SIDE COVER**

brown



grey

\* California Energy Commission data: water 102 °F, air 62 °F, filtering 1x2 hour. Based on Wellis measurements with heat pump.



energy consumption  
**2.7**  
kWh / day\*

## TEIDE LIFE

63 × 85 × 34 in  
1 reclining seat, 2 upright seats





**Premium Edition**

<b>Net weight / Water volume</b>	686 lbs / 198 gallons
<b>Frame</b>	Wellis PolyStyrol (WPS)
<b>Cabinet</b>	LightSide™ UV-proof wood textured
<b>Reinforcement</b>	Poli-MAX™
<b>Scandinavian insulation</b>	Polyfoam 1.4 in
<b>Total number of jets</b>	32
<b>∞ Infinity jets</b>	2
<b>Min / Opt. power requirement</b>	16A / 25A - 240V/60Hz
<b>Pumps</b>	1 × 3 HP single speed
<b>Circulation pump</b>	W-EC pump (0.25 kW)
<b>Heater</b>	4 kW
<b>Control box / panel</b>	Gecko (IN.YE-3) / SmartTouch
<b>Auxiliary control panel</b>	–
<b>Water sanitization</b>	Ozmix™ system (Ozone + mixer)
<b>Cartridge filter</b>	2 × MicroPlus antibacterial
<b>Flat fountain jets</b>	2 Lighted Fountain Jets
<b>Waterfall</b>	–
<b>Light-zone system</b>	Zone 1: Well, EvenLight Jet, and Edge Lights Zone 2: Cabinet and Corner Lighting
<b>Remote spa control</b>	SmartPhone app with wifi connection
<b>Thermo cover</b>	standard - 3.5 in
<b>W.I.S. Inline system</b>	built-in water analyzer

**Options**

3 kW heat pump
Smart-In step prepared to house heat pump



New flat fountains



Ultra soft pillows

**ACRYLIC**

Sterling silver



Tuscan sun

**SIDE COVER**

brown



grey

\* California Energy Commission data: water 102 °F, air 62 °F, filtering 1x2 hour. Based on Wellis measurements with heat pump.



energy consumption  
**2.9**  
kWh / day\*

## ATLAS LIFE

85 × 85 × 34 in  
1 reclining seat, 5 upright seats



**Premium Edition**

Net weight / Water volume	862 lbs / 291 gallons
Frame	Wellis PolyStyrol (WPS)
Cabinet	LightSide™ UV-proof wood textured
Reinforcement	Poli-MAX™
Scandinavian insulation	Polyfoam 1.4 in
Total number of jets	43
∞ Infinity jets	4
Min / Opt. power requirement	16A / 25A - 240V/60Hz
Pumps	1 × 3 HP single speed
Circulation pump	W-EC pump (0.25 kW)
W.O.W. system	electronic water diverter
Heater	4 kW
Control box / panel	Gecko (IN.YE-3) / SmartTouch
Auxiliary control panel	–
Water sanitization	Ozmix™ system (Ozone + mixer)
Cartridge filter	2 × MicroPlus antibacterial
Flat fountain jets	–
Waterfall	24" Lighted Waterfall
Light-zone system	Zone 1: Well, EvenLight Jet, and Edge Lights Zone 2: Cabinet and Corner Lighting
Remote spa control	SmartPhone app with wifi connection
Thermo cover	standard - 3.5 in
W.I.S. Inline system	built-in water analyzer

**Options**

3 kW heat pump
Smart-In step prepared to house heat pump



W.O.W. system - electronic water diverter with pulsar function



High performance lounge with infinity jets

**ACRYLIC**

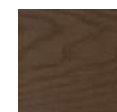
*Sterling silver*



*Tuscan sun*



*Midnight canyon*

**SIDE COVER**

*brown*



*grey*

\* California Energy Commission data: water 102 °F, air 62 °F, filtering 1×2 hour. Based on Wellis measurements with heat pump.



energy consumption  
**2.9**  
kWh / day\*

## MANDALA LIFE

85 × 85 × 34 in  
7 upright seats



**Premium Edition**

Net weight / Water volume	855 lbs / 297 gallons
Frame	Wellis PolyStyrol (WPS)
Cabinet	LightSide™ UV-proof wood textured
Reinforcement	Poli-MAX™
Scandinavian insulation	Polyfoam 1.4 in
Total number of jets	46 jets
∞ Infinity jets	2
Min / Opt. power requirement	16A / 25A - 240V/60Hz
Pumps	1 × 3 HP single speed
Circulation pump	W-EC pump (0.25 kW)
W.O.W. system	electronic water diverter
Heater	4 kW
Control box / panel	Gecko (IN.YE-3) / SmartTouch
Auxiliary control panel	–
Water sanitization	Ozmix™ system (Ozone + mixer)
Cartridge filter	2 × MicroPlus antibacterial
Flat fountain jets	–
Waterfall	2 Lighted Waterfalls
Light-zone system	Zone 1: Well, EvenLight Jet, and Edge Lights Zone 2: Cabinet and Corner Lighting
Remote spa control	SmartPhone app with wifi connection
Thermo cover	standard - 3.5 in
W.I.S. Inline system	built-in water analyzer

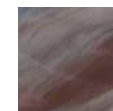
2 lighted waterfalls

2 infinity jets  
and intensive neck massage**Options**

3 kW heat pump
Smart- In step prepared to house heat pump

**ACRYLIC**

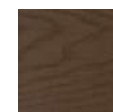
Sterling silver



Tuscan sun



Midnight canyon

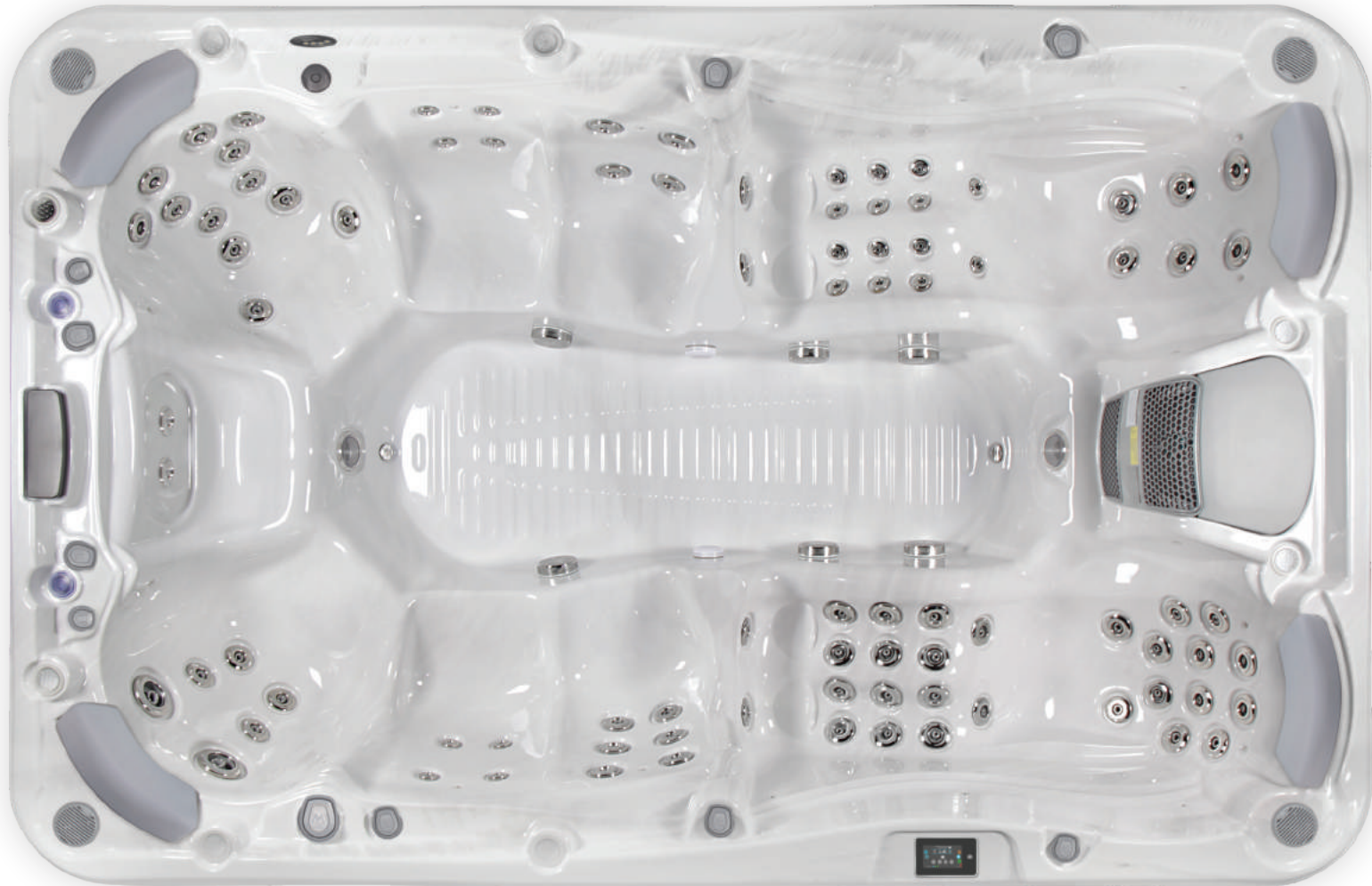
**SIDE COVER**

brown



grey

\* California Energy Commission data: water 102 °F, air 62 °F, filtering 1×2 hour. Based on Wellis measurements with heat pump.



energy consumption  
**6.4**  
kWh / day\*

## OLYMPUS LIFE

140 × 91 × 39 in  
2 reclining seats, 7 upright seats



<b>Net weight / Water volume</b>	1 984 lbs / 616 gallons
<b>Frame</b>	Stainless steel
<b>Cabinet</b>	HorizontSide™ UV-proof wood textured
<b>Reinforcement</b>	Fiberglass reinforced
<b>Total number of jets</b>	88
<b>Min. / Opt. power requirement</b>	32A / 60A - 240V/60Hz
<b>Pumps</b>	1 × 3 HP, double speed 2 × 2 HP single speed 1 × 3 HP, single speed
<b>Circulation pump</b>	1 × 1.25 HP (1,1 kW)
<b>Heater</b>	4 kW
<b>Control box / panel</b>	Gecko (IN.YT-8) / SmartTouch
<b>Auxiliary control panel</b>	1 × 1 button + 1 × 4 buttons
<b>Water sanitization</b>	Ozmix™ System
<b>Cartridge filter</b>	3 × MicroPlus
<b>Laminar fountain jets</b>	2 Lighted Fountain Jets
<b>Waterfall</b>	Lighted Waterfall
<b>Led lights</b>	20 × exclusive LEDs + lighting jets
<b>Sound system</b>	Aquasoul™ Pro 4.1 Pop-Up speakers
<b>Aromatic therapy</b>	Liquid Aroma (without fragrance)
<b>Remote spa control</b>	SmartPhone app with wifi connection
<b>Scandinavian Insulation</b>	standard
<b>Heat exchanger preparation</b>	standard

### Options

3 kW heat pump

Smart-In step prepared to house heat pump



7 upright seats



Body flow and Intenso reclining seat

### ACRYLIC



*Sterling silver*

### SIDE COVER



*brown*



*grey*

\* California Energy Commission data: water 102 °F, air 62 °F, filtering 1×2 hour. Based on Wellis measurements with heat pump.





# CITYLIFE SERIES

Malaga Life  
Lima Life  
Manhattan Life  
Prague Life  
Lugano Life  
Vienna Life  
Milano P&P  
Oslo P&P



energy consumption  
**3.0**  
kWh / day\*

## MALAGA LIFE

86 × 86 × 35 in  
1 reclining seat, 5 upright seats



**Deluxe Scandi Edition**

Net weight / Water volume	739 lbs / 317 gallons
Frame	Wellis PolyStyrol (WPS)
Cabinet	HorizontSide™ UV-proof wood textured
Reinforcement	Poli-MAX™
Scandinavian insulation	Polyfoam 1.4 in
Total number of jets	40 jets
Min / Opt. power requirement	22A / 35A - 240V/60Hz
Pumps	2 × 3 HP - single speed
Circulation pump	W-EC pump (0.25 kW)
W.O.W. system	-
Heater	4 kW
Control box / panel	Gecko (IN.YE-3) / Easy7
Auxiliary control panel	-
Water sanitization	Ozmix™ system (Ozone + mixer)
Cartridge filter	1 × MicroPlus antibacterial
Flat fountain jets	3 Lighted Fountain Jets
Waterfall	Lighted Waterfall
Light system	Well, Edge, and Corner Lighting
Thermo cover	standard - 3.5 in

**Options**

3 kW heat pump
Smart-In step prepared to house heat pump

**Plug & Play Option**

SmartPhone app with wifi connection
-------------------------------------



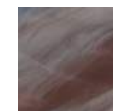
Neck massage



Body flow massage seat

**ACRYLIC**

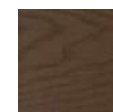
Sterling silver



Tuscan sun



Midnight canyon

**SIDE COVER**

brown



grey

\* California Energy Commission data: water 102 °F, air 62 °F, filtering 1×2 hour. Based on Wellis measurements with heat pump.



energy consumption  
**3.0**  
kWh / day\*

## LIMA LIFE

86 × 86 × 35 in  
7 upright seats



**Deluxe Scandi Edition**

Net weight / Water volume	739 lbs / 343 gallons
Frame	Wellis PolyStyrol (WPS)
Cabinet	HorizontSide™ UV-proof wood textured
Reinforcement	Poli-MAX™
Scandinavian insulation	Polyfoam 1.4 in
Total number of jets	40 jets
Min / Opt. power requirement	22A / 35A - 240V/60Hz
Pumps	2 × 3 HP - single speed
Circulation pump	W-EC Pump (0.25 kW)
W.O.W. system	-
Heater	4 kW
Control box / panel	Gecko (IN.YE-3) / Easy7
Auxiliary control panel	-
Water sanitization	Ozmix™ system (Ozone + mixer)
Cartridge filter	1 × MicroPlus antibacterial
Flat fountain jets	2 Lighted Fountain Jets
Waterfall	Lighted Waterfall
Light system	Well, Edge, and Corner Lighting
Thermo cover	standard - 3.5 in

**Options**

3 kW heat pump
Smart-In step prepared to house heat pump

**Plug & Play Option**

SmartPhone app with wifi connection
-------------------------------------



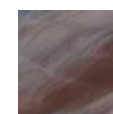
Lighted Waterfall



Neck massage

**ACRYLIC**

Sterling silver



Tuscan sun



Midnight canyon

**SIDE COVER**

brown



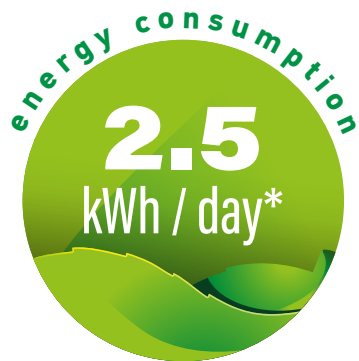
grey

\* California Energy Commission data: water 102 °F, air 62 °F, filtering 1x2 hour. Based on Wellis measurements with heat pump.



## MANHATTAN LIFE

79 × 60 × 33 in  
1 reclining seat, 2 upright seats



**Deluxe Scandi Edition**

Net weight / Water volume	617 lbs / 148 gallons
Frame	Wellis PolyStyrol (WPS)
Cabinet	HorizontSide™ UV-proof wood textured
Reinforcement	Poli-MAX™
Scandinavian insulation	Polyfoam 1.4 in
Total number of jets	30 jets
Min / Opt. power requirement	22A / 35A - 240V/60Hz
Pumps	3 HP - single speed
Circulation pump	W-EC pump (0.25 kW)
W.O.W. system	-
Heater	4 kW
Control box / panel	Gecko (IN.YE-3) / Easy7
Auxiliary control panel	-
Water sanitization	Ozmix™ system (Ozone + mixer)
Cartridge filter	MicroPlus antibacterial
Flat fountain jets	2 Lighted Fountain Jets
Waterfall	-
Light system	Well, Edge, and Corner Lighting
Thermo cover	standard - 3.5 in



Neck massage



2 Lighted Fountains

**Options**

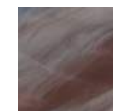
3 kW heat pump
Smart-In step prepared to house heat pump

**Plug & Play Option**

SmartPhone app with wifi connection
-------------------------------------

**ACRYLIC**

Sterling silver



Tuscan sun



Midnight canyon

**SIDE COVER**

brown



grey

\* California Energy Commission data: water 102 °F, air 62 °F, filtering 1x2 hour. Based on Wellis measurements with heat pump.



energy consumption  
**2.9**  
kWh / day\*

## PRAGUE LIFE

79 × 79 × 35 in  
1 reclining seat, 5 upright seats





**Deluxe Scandi Edition**

Net weight / Water volume	498 lbs / 317 gallons
Frame	Wellis PolyStyrol (WPS)
Cabinet	HorizontSide™ UV-proof wood textured
Reinforcement	Poli-MAX™
Scandinavian insulation	Polyfoam 1.4 in
Total number of jets	50 jets
Min / Opt. power requirement	16A / 25A - 240V/60Hz
Pumps	1 × 3 HP - single speed
Circulation pump	W-EC pump (0.25 kW)
W.O.W. system	-
Heater	4 kW
Control box / panel	Gecko (IN.YE-3) / Easy7
Auxiliary control panel	-
Water sanitization	Ozmix™ system (Ozone + mixer)
Cartridge filter	1 Superfine
Flat fountain jets	2 Lighted Fountain Jets
Waterfall	-
Light system	Well, Edge, and Corner Lighting
Thermo cover	standard - 3.5 in

**Options**

3 kW heat pump
Smart-In step prepared to house heat pump

**Plug & Play Option**

SmartPhone app with wifi connection
-------------------------------------



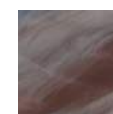
Focus massage seat



Intensive calf massage

**ACRYLIC**

Sterling silver



Tuscan sun



Midnight canyon

**SIDE COVER**

brown



grey

\* California Energy Commission data: water 102 °F, air 62 °F, filtering 1×2 hour. Based on Wellis measurements with heat pump.



energy consumption  
**3.0**  
kWh / day\*

## LUGANO LIFE

91 × 91 × 35 in

1 reclining seat, 5 upright seats



**Deluxe Scandi Edition**

Net weight / Water volume	853 lbs / 370 gallons
Frame	Wellis PolyStyrol (WPS)
Cabinet	HorizontSide™ UV-proof wood textured
Reinforcement	Poli-MAX™
Scandinavian insulation	Polyfoam 1.4 in
Total number of jets	52 jets
Min / Opt. power requirement	22A / 35A - 240V/60Hz
Pumps	2 × 3 HP - single speed
Circulation pump	W-EC pump (0.25 kW)
W.O.W. system	-
Heater	4 kW
Control box / panel	Gecko (IN.YE-3) / Easy7
Auxiliary control panel	-
Water sanitization	Ozmix™ system (Ozone + mixer)
Cartridge filter	3 Superfine
Flat fountain jets	2 Lighted Fountain Jets
Waterfall	-
Light system	Well, Edge, and Corner Lighting
Thermo cover	standard - 3.5 in

**Options**

3 kW heat pump
Smart-In step prepared to house heat pump

**Plug & Play Option**

SmartPhone app with wifi connection
-------------------------------------



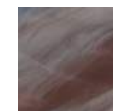
Focus massage seat



Intenso massage seat

**ACRYLIC**

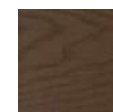
Sterling silver



Tuscan sun



Midnight canyon

**SIDE COVER**

brown



grey

\* California Energy Commission data: water 102 °F, air 62 °F, filtering 1×2 hour. Based on Wellis measurements with heat pump.



energy consumption  
**3.0**  
kWh / day\*

## VIENNA LIFE

91 × 91 × 35 in  
7 upright seats



**Deluxe Scandi Edition**

Net weight / Water volume	498 lbs / 343 gallons
Frame	Wellis PolyStyrol (WPS)
Cabinet	HorizontSide™ UV-proof wood textured
Reinforcement	Poli-MAX™
Scandinavian insulation	Polyfoam 1.4 in
Total number of jets	62 jets
Min / Opt. power requirement	22A / 35A - 240V/60Hz
Pumps	2 × 3 HP - single speed
Circulation pump	W-EC pump (0.25 kW)
W.O.W. system	-
Heater	4 kW
Control box / panel	Gecko (IN.YE-3) / Easy7
Auxiliary control panel	-
Water sanitization	Ozmix™ system (Ozone + mixer)
Cartridge filter	3 Superfine
Flat fountain jets	2 Lighted Fountain Jets
Waterfall	-
Light system	Well, Edge, and Corner Lighting
Thermo cover	standard - 3.5 in

**Options**

3 kW heat pump
Smart-In step prepared to house heat pump

**Plug & Play Option**

SmartPhone app with wifi connection
-------------------------------------



Intensive hip massage



Wellis Dome

**ACRYLIC**

Sterling silver



Tuscan sun



Midnight canyon

**SIDE COVER**

brown



grey

\* California Energy Commission data: water 102 °F, air 62 °F, filtering 1x2 hour. Based on Wellis measurements with heat pump.



## MILANO P&P

85 × 75 × 34 in

"Plug & Play", 1 reclining seat, and 4 upright seats

**Deluxe Scandi Edition**

Net weight / Water volume	618 lbs / 255 gallons
Frame	Wellis PolyStyrol (WPS)
Cabinet	HorizontSide™ UV-proof wood textured
Reinforcement	Poli-MAX™
Scandinavian insulation	Polyfoam 1.4 in
Total number of jets	36 jets
Min / Opt. power requirement	12A - 120V / 60Hz
Pumps	1 × 1.5 HP - double speed
Circulation pump	-
W.O.W. system	-
Heater	1 kW
Control box / panel	Gecko (IN.YJ-2) / Easy 4
Auxiliary control panel	-
Water sanitization	Ozmix™ system (Ozone + mixer)
Cartridge filter	1 Superfine
Flat fountain jets	-
Waterfall	-
Light-zone system	14 x LED Lights
Thermo cover	standard - 3.5 in



Focus massage seat



Body Flow massage seat

**Options**

3 kW heat pump
Smart-In step prepared to house heat pump

**Plug & Play Option**

SmartPhone app with wifi connection
-------------------------------------

**ACRYLIC**

Sterling silver

**SIDE COVER**

grey

\* California Energy Commission data: water 102 °F, air 62 °F, filtering 1×2 hour. Based on Wellis measurements with heat pump.



## OSLO P&P

79 × 59 × 31 in  
"Plug & Play", 2 reclining seats, and 1 upright seat



**Deluxe Scandi Edition**

Net weight / Water volume	551 lbs / 200 gallons
Frame	Wellis Polystyrol (WPS)
Cabinet	HorizontSide™ UV-proof wood textured
Reinforcement	Poli-MAX™
Scandinavian insulation	Polyfoam 1.4 in
Total number of jets	30 jets
Min / Opt. power requirement	12A - 120V / 60Hz
Pumps	1 × 1.5 HP - double speed
Circulation pump	-
W.O.W. system	-
Heater	1 kW
Control box / panel	Gecko (IN.YJ-2) / Easy 4
Auxiliary control panel	-
Water sanitization	Ozmix™ system (Ozone + mixer)
Cartridge filter	1 Superfine
Flat fountain jets	-
Waterfall	-
Light-zone system	10 x LED Lights
Thermo cover	standard - 3.5 in

**Options**

3 kW heat pump
Smart-In step prepared to house heat pump

**Plug & Play Option**

SmartPhone app with wifi connection
-------------------------------------



BodyFlow massage seat



Foot massage

**ACRYLIC**

Sterling silver

**SIDE COVER**

grey

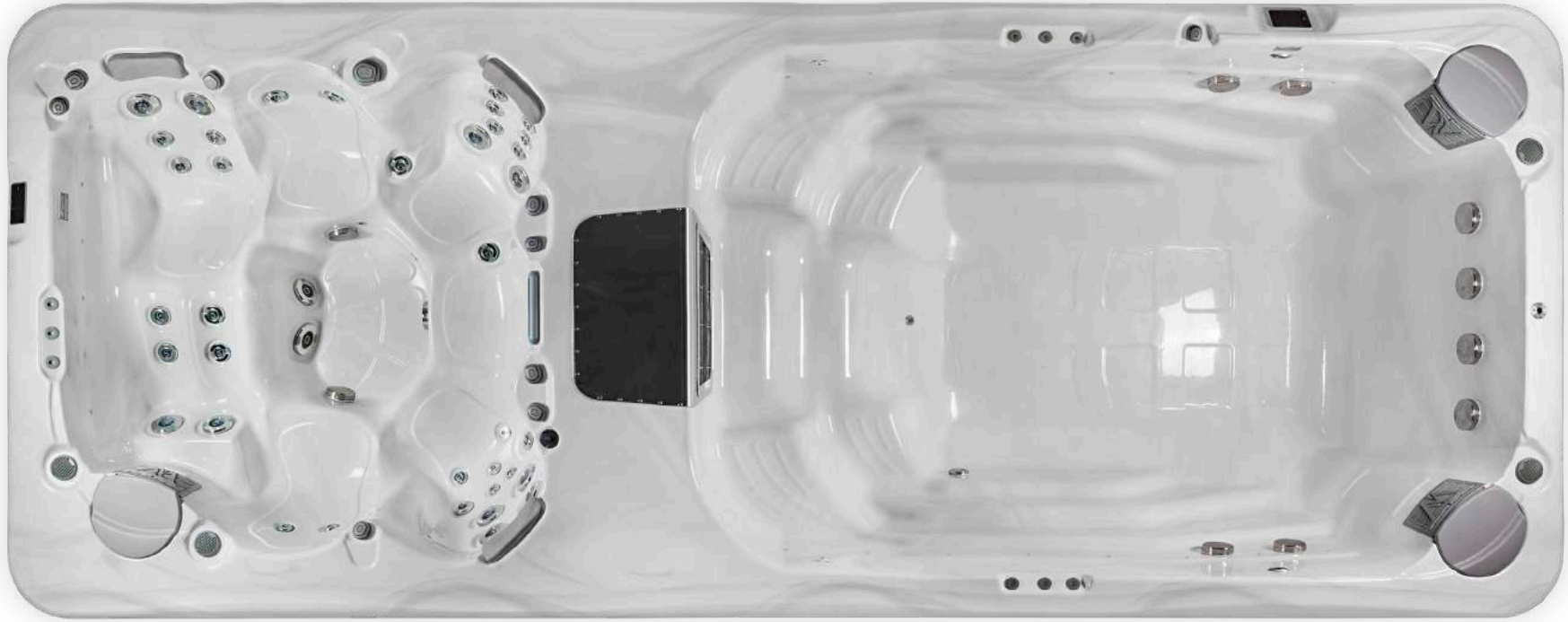
\* California Energy Commission data: water 102 °F, air 62 °F, filtering 1x2 hour. Based on Wellis measurements with heat pump.



# SWIMLINE SERIES



Rio Grande Life  
Amazon Life  
Danube Life



## RIO GRANDE LIFE

19.8 × 7.8 × 4.9 in  
1 reclining seat, 4 upright seats



Net weight / Water volume	2 866 lbs / 1 744 gallons
Frame	Stainless steel
Cabinet	HorizontSide™ or semi-inground
Reinforcement	Fiberglass reinforced
Total number of jets	40
Min. / Opt. power requirement* (hot tub)	20A / 35A - 240V/60Hz
Min. / Opt. power requirement* (swim spa)	35A / 48A - 240V/60Hz
Pumps (hot tub)	2 x 3 HP - single speed + circ. pump (0.25kW)
Pumps (swim spa)	3 x 3 HP - double speed + circ. pump (1.1kW)
Heater	4 kW
Control box / panel	Gecko (IN.YE-3 + IN.YE-8) / 2 x SmartTouch
Auxiliary control panel	-
Water sanitization	Ozmix™ System
Cartridge filter	2 Superfine
Laminar fountain jets	3 x 6 Lighted Fountain Jets
Waterfall	Lighted Waterfall
Led lights	2 x 16 exclusive LEDs + illuminated controls
Sound system	AquaSoul™ Pro 4.1
Aromatic therapy	Liquid Aroma (without fragrance)
SmartPhone app - wifi connection	standard
Scandinavian insulation	standard
Heat exchanger preparation	standard
Swimming stick	standard

### Options

4.5 kW heat pump

Rowing equipment

Semi-inground cabinet



W-Flow system



SmartTouch

### ACRYLIC



*Sterling silver*

### SIDE COVER



*brown*



*grey*

\* If the minimum current is connected, the massage motor(s) and the heating unit cannot be operated at the same time.



## AMAZON LIFE

18.0 × 7.6 × 4.9 in  
2 upright seats, swim area



Net weight / Water volume	2 756 lbs / 2 113 gallons
Frame	Stainless steel
Cabinet	HorizontSide™ or semi-inground
Reinforcement	Fiberglass reinforced
Total number of jets	27
Min. / Opt. power requirement*	35A / 60A - 240V/60Hz
Pumps (hot tub)	1 x 3 HP - single speed + circ. pump (1.1kW)
Pumps (swim spa)	3 x 3 HP - double speed
Heater	4 kW
Control box / panel	Gecko (IN.YE-8) / SmartTouch
Auxiliary control panel	-
Water sanitization	Ozmix™ System
Cartridge filter	4 Superflne
Laminar fountain jets	2 x 3 Lighted Fountain Jets
Waterfall	-
Led lights	25 x exclusive LEDs + illuminated controls
Sound system	AquaSoul™ Pro 4.1
Aromatic therapy	-
SmartPhone app - wifi connection	standard
Scandinavian insulation	standard
Heat exchanger preparation	standard
Swimming stick	standard

### Options

4.5 kW heat pump

Rowing equipment

Semi-inground cabinet



W-Flow system



SmartTouch

### ACRYLIC



*Sterling silver*

### SIDE COVER



*brown*



*grey*

\* If the minimum current is connected, the massage motor(s) and the heating unit cannot be operated at the same time.



## DANUBE LIFE

14.9 × 7.8 × 4.9 in  
2 upright seats, swim area





<b>Net weight / Water volume</b>	2 308 lbs / 1 562 gallons
<b>Frame</b>	Stainless steel
<b>Cabinet</b>	HorizontSide™ or semi-inground
<b>Reinforcement</b>	Fiberglass reinforced
<b>Total number of jets</b>	24
<b>Min. / Opt. power requirement*</b>	35A / 60A - 240V/60Hz
<b>Pumps (hot tub)</b>	1 x 3 HP - single speed + circ. pump (1.1kW)
<b>Pumps (swim spa)</b>	3 x 3 HP - double speed
<b>Heater</b>	4 kW
<b>Control box / panel</b>	Gecko (IN.YE-8) / SmartTouch
<b>Auxiliary control panel</b>	-
<b>Water sanitization</b>	Ozmix™ System
<b>Cartridge filter</b>	2 Superfine
<b>Laminar fountain jets</b>	2 x 3 Lighted Fountain Jets
<b>Waterfall</b>	-
<b>Led lights</b>	18 x exclusive LEDs + illuminated controls
<b>Sound system</b>	AquaSoul™ Pro 4.1
<b>Aromatic therapy</b>	-
<b>SmartPhone app - wifi connection</b>	standard
<b>Scandinavian insulation</b>	standard
<b>Heat exchanger preparation</b>	standard
<b>Swimming stick</b>	standard

### Options

4.5 kW heat pump

Rowing equipment

Semi-inground cabinet



W-Flow system



SmartTouch

### ACRYLIC



*Sterling silver*

### SIDE COVER



*brown*



*grey*

\* If the minimum current is connected, the massage motor(s) and the heating unit cannot be operated at the same time.



Wellis®

The products included in the catalog are for illustration purposes only, and may not always match the specifications of the advertised product. Wellis reserves the right to modify the products – including the product range – without prior notice, since they are valid at the time they are delivered to the printing press. We may not be made responsible for printing errors.

MAR1xxx

[wellispa.com](http://wellispa.com)